



C/EBP ϵ Polyclonal Antibody

Catalog No	YP-Ab-01583
Isotype	IgG
Reactivity	Human;Rat;Mouse;
Applications	WB;IHC;IF;ELISA
Gene Name	CEBPE
Protein Name	CCAAT/enhancer-binding protein epsilon
Immunogen	The antiserum was produced against synthesized peptide derived from human C/EBP-epsilon. AA range:40-89
Specificity	C/EBP ϵ Polyclonal Antibody detects endogenous levels of C/EBP ϵ protein.
Formulation	Liquid in PBS containing 50% glycerol, 0.5% BSA and 0.02% sodium azide.
Source	Polyclonal, Rabbit,IgG
Purification	The antibody was affinity-purified from rabbit antiserum by affinity-chromatography using epitope-specific immunogen.
Dilution	Western Blot: 1/500 - 1/2000. Immunohistochemistry: 1/100 - 1/300. Immunofluorescence: 1/200 - 1/1000. ELISA: 1/5000. Not yet tested in other applications.
Concentration	1 mg/ml
Purity	$\geq 90\%$
Storage Stability	-20°C/1 year
Synonyms	CEBPE; CCAAT/enhancer-binding protein epsilon; C/EBP epsilon
Observed Band	34kD
Cell Pathway	Nucleus .
Tissue Specificity	Strongest expression occurs in promyelocyte and late-myeloblast-like cell lines.
Function	function:C/EBP are DNA-binding proteins that recognize two different motifs: the CCAAT homology common to many promoters and the enhanced core homology common to many enhancers.,online information:CEBPE mutation db,PTM:Phosphorylated.,similarity:Belongs to the bZIP family. C/EBP subfamily.,similarity:Contains 1 bZIP domain.,subunit:Binds DNA as a dimer and can form stable heterodimers with C/EBP delta.,tissue specificity:Strongest expression occurs in promyelocyte and late-myeloblast-like cell lines.,
Background	The protein encoded by this gene is a bZIP transcription factor which can bind as a homodimer to certain DNA regulatory regions. It can also form heterodimers with the related protein CEBP-delta. The encoded protein may be essential for terminal differentiation and functional maturation of committed granulocyte progenitor cells. Mutations in this gene have been associated with Specific Granule Deficiency, a rare congenital disorder. Multiple variants of this gene have



been described, but the full-length nature of only one has been determined. [provided by RefSeq, Jul 2008],

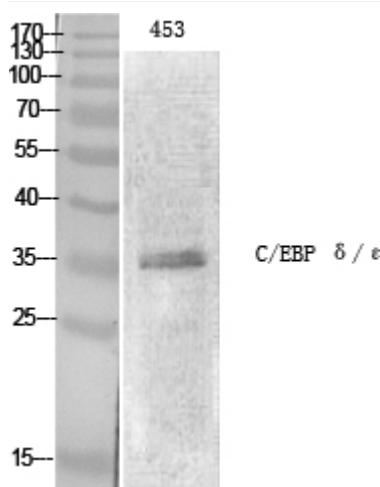
matters needing attention

Avoid repeated freezing and thawing!

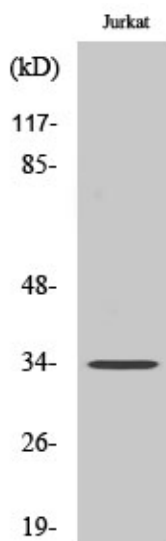
Usage suggestions

This product can be used in immunological reaction related experiments. For more information, please consult technical personnel.

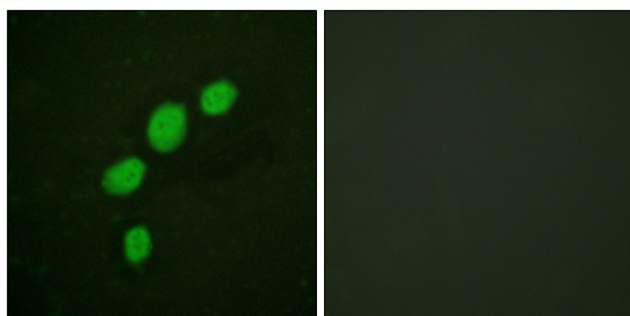
Products Images



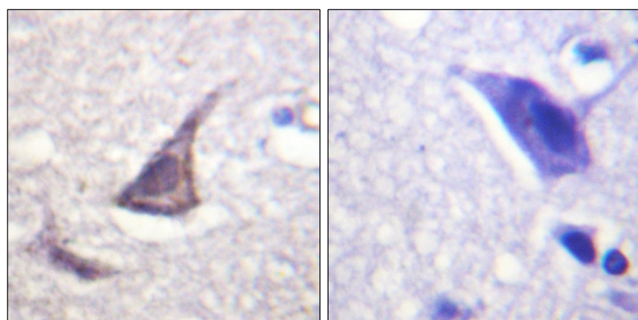
Western Blot analysis of various cells using C/EBP ϵ Polyclonal Antibody cells nucleus extracted by Minute TM Cytoplasmic and Nuclear Fractionation kit (SC-003, Inventbiotech, MN, USA).



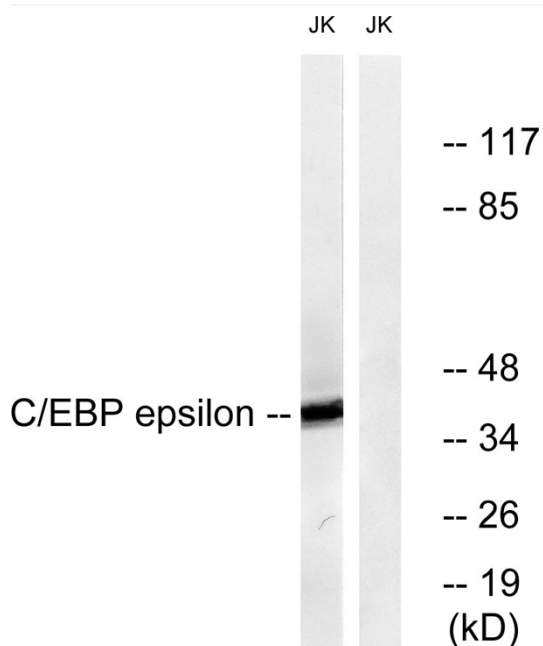
Western Blot analysis of Jurkat cells using C/EBP ϵ Polyclonal Antibody cells nucleus extracted by Minute TM Cytoplasmic and Nuclear Fractionation kit (SC-003, Inventbiotech, MN, USA).



Immunofluorescence analysis of HeLa cells, using C/EBP-epsilon Antibody. The picture on the right is blocked with the synthesized peptide.



Immunohistochemistry analysis of paraffin-embedded human brain tissue, using C/EBP-epsilon Antibody. The picture on the right is blocked with the synthesized peptide.



Western blot analysis of lysates from JurKat cells, treated with Insulin 0.01U/ml 15', using C/EBP-epsilon Antibody. The lane on the right is blocked with the synthesized peptide.